

**Submission
No 73**

**INQUIRY INTO DOMESTIC VIOLENCE TRENDS AND
ISSUES IN NSW**

Organisation: Campbelltown City Council

Date received: 9/01/2012

Submission to inquiry into domestic violence trends and issues in NSW: Campbelltown City Council

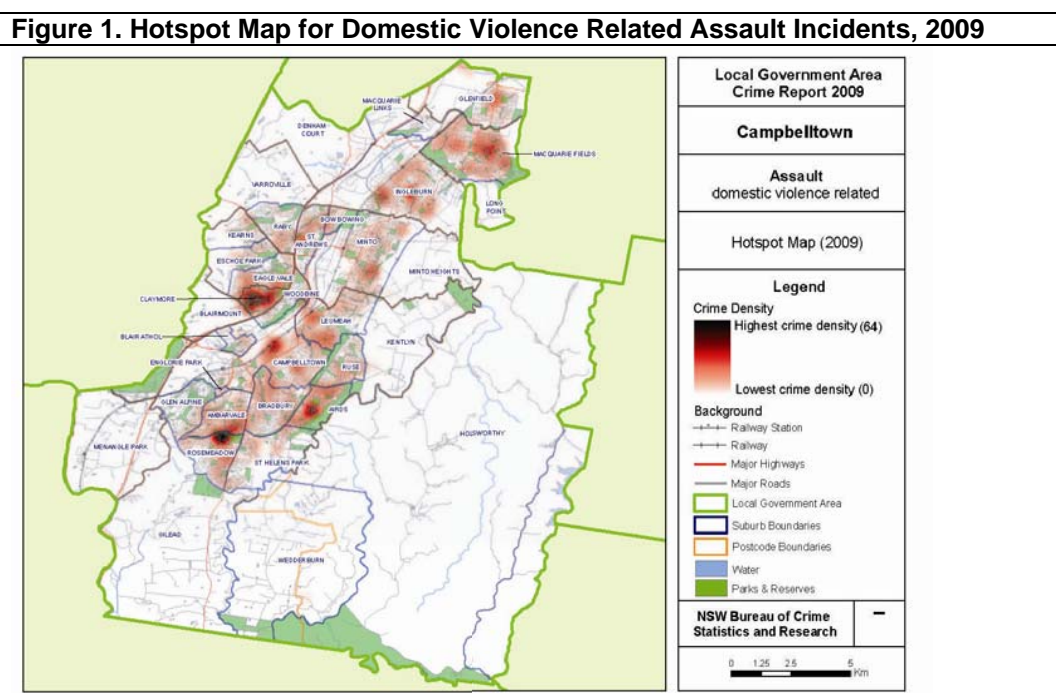
This submission to the Standing Committee on Social Issues will address point 2 'early intervention strategies to prevent domestic violence', and other trends that have been reported for the Campbelltown Local Government Area.

Domestic Violence Trends for Campbelltown

The Campbelltown Local Government Area (LGA) is a city with a wide variation in disadvantage. Poverty is the major factor affecting quality of life of residents in Campbelltown. The Australian Bureau of Statistic's Socio-Economic Indexes for Areas (SEIFA), which is derived from data for income, employment, educational attainment and other measures, ranks Campbelltown as the fifth most disadvantaged LGA across Sydney. The Campbelltown suburb of Claymore is ranked as the most disadvantaged suburb across the whole of the Sydney region with high rates of unemployment, low educational attainment, poor health and very low incomes.

Campbelltown is ranked within the top 20 Local Government Areas for domestic assault in 2010 across NSW. As the only metropolitan LGA listed in the top 20, Campbelltown has the highest rate of domestic assault incidents across Sydney at a rate of 680.1 per 100,000 head of population¹.

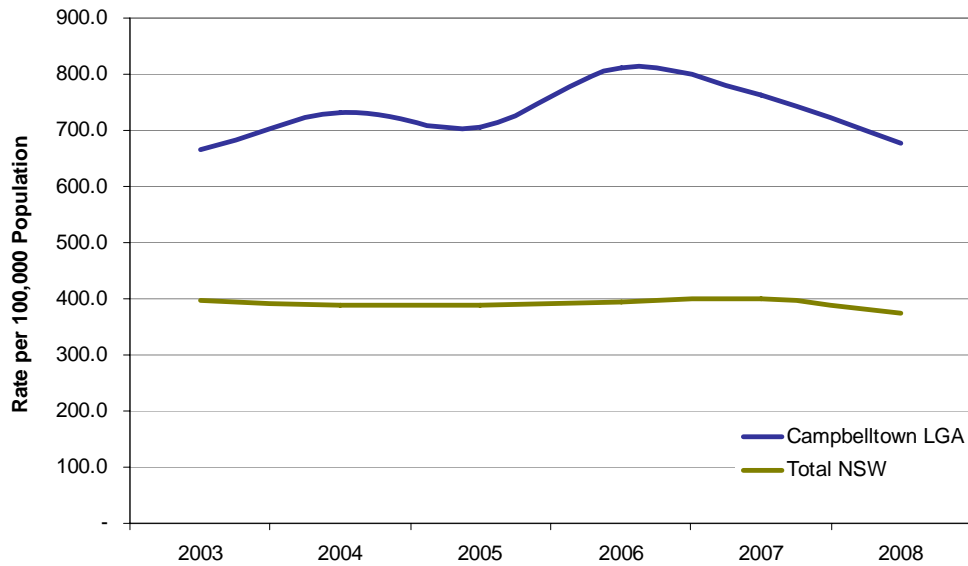
The highest density of reported assaults occurs in the suburbs of Macquarie Fields, Claymore, Rosemeadow, Minto and Airds which also reflect a high level of public housing. BOCSAR 2009 findings show that though the Campbelltown LGA has a high incidence of Domestic Violence compared to other Local Government Areas, the rate has reduced over recent years.



¹ Katrina Grech and Melissa Burgess, Trends and patterns in domestic violence assaults: 2001 to 2010, Issue paper no. 61 NSW Bureau of Crime

The graph shown below illustrates the rate of domestic violence related assaults per 100,000 persons in Campbelltown compared with NSW. During the period 2003-2008 the rate of DV assaults has varied between 666 (2003) to 811 (2006) per 100,000 persons at a rate 67% to 200% higher than the NSW rate².

Graph 1. Recorded rate of Domestic Violence Related Assault

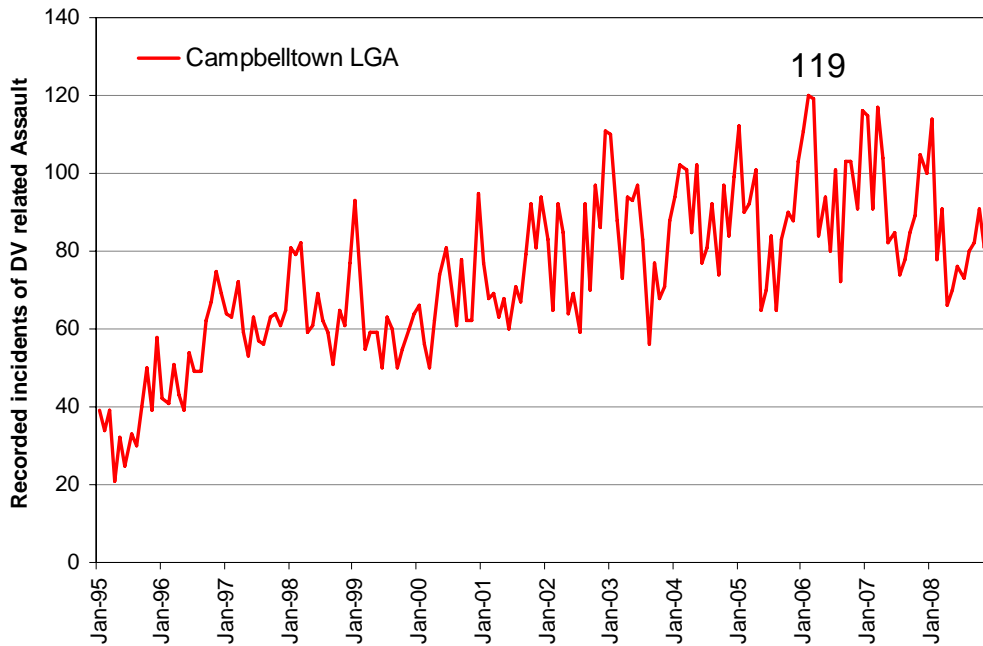


Source: BOCSAR (2009)

The following graph illustrates the number of DV related incidents by month from January 1995 to December 2008. The highest number of DV related assaults in Campbelltown was recorded in February 2006 (119 assaults). Note spikes of DV related assault occur in the summer months between December to March. In summary, one in every 3.5 DV assaults occur between January to March.

² BOCSAR 2009

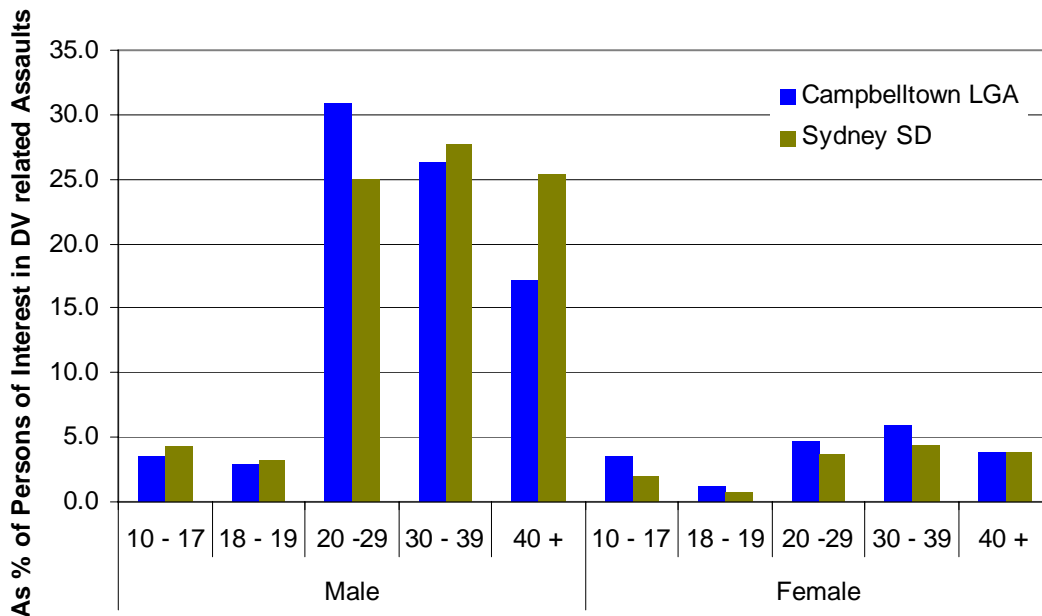
Graph 2. Recorded number of Domestic Violence Related Assault, 1995-2008



Source: BOCSAR (2009)

For persons of interest in domestic violence related assault, 80% are male compared with 85% across Sydney SD. Males in Campbelltown who are aged 20-29 years account for 31% for all persons of interest and are 25% more likely to be a person of interest when compared with Sydney SD.

Graph 3. Persons of Interest in Domestic Violence Related Assault, 2008



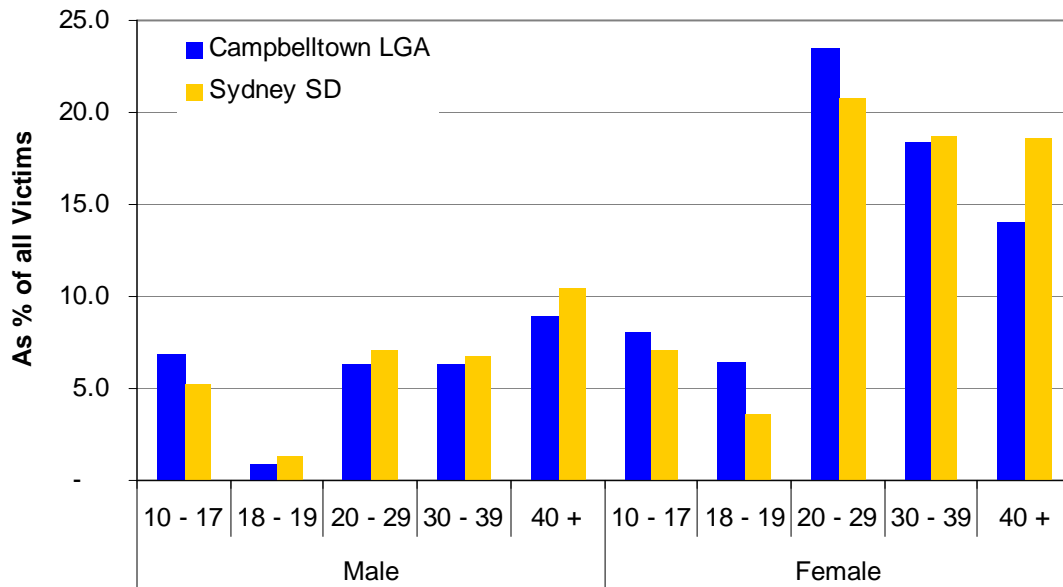
Source: BOCSAR (2009) Special Order

With regard to victims of domestic violence related assault, women account for approximately 70% of all victims and are 2.4 times more likely to be the victim when compared with males in Campbelltown. The following graph illustrates % of victims by age and gender. Females aged 20-29 years are the most likely to be victims of

DV related assault. When compared with Sydney SD, males and females aged 10-17 years, females aged 18-19 years, and females aged 20-29 years have higher rates of being a victim of DV related assault. Other key findings include,

- 1 in 11 young males (10-17 years) who are victims of DV related Assault in Sydney SD, reside in Campbelltown LGA.
- 1 in 8 females aged 18-19 years in Sydney SD who are victims of DV related Assault reside in Campbelltown LGA.

Graph 4. Victims of Domestic Violence Related Assault, 2008



Source: BOCSAR (2009) Special Order

With regard to the issue of alcohol and domestic violence, Campbelltown Police Command reported that from January 2011 to October 2011 the offender was under the influence of alcohol in 18.8% of reported incidents.

Current Initiatives of Campbelltown City Council

Campbelltown City Council are committed to preventing violence against women and improving women's understanding of their rights and access to services on issues such as finances, violence, education and health.

Key Issues

- Need for increased awareness to stop violence against women
- Reduce language barriers faced by CALD women
- Improve women's understanding of their rights and access to services on issues such as finances, violence, education and health.

To address these issues, Campbelltown City Council currently undertakes a range of initiatives for women in Campbelltown LGA, including;

- The employment of a Community Development Officer who's role partly covers Women's issues
- Convenes the Campbelltown Domestic Violence Liaison Committee
- Hosts an annual Domestic Violence Liaison Committee planning day
- Support and are involved in community events targeted at women's issues including International Women's Day, Reclaim the Night, White Ribbon day, and Stop DV Day. Council often provides financial and administrative support to community DV events.
- Encourage staff to participate in events such as White Ribbon Day and International Women's Day.

Campbelltown Domestic Violence Liaison Committee

The Campbelltown Domestic Violence Liaison Committee (CDVLC) is auspiced by the Macarthur Legal Centre. It works towards the elimination of domestic violence through the development of partnerships, and increased coordination of service provision in the Campbelltown Local Government area.

The CDVLC exists to resource, support and plan for policies that empower women and children experiencing domestic violence. The committee uses a range of community development strategies including community education, skills development and advocacy to create opportunities that facilitate change for women and their families.

The Campbelltown Domestic Violence Committee works towards reducing violence against women and their family by:

- Raising awareness for the protection of women and children in situations of domestic violence within the Campbelltown LGA.
- Enhancing interagency responses to women and children affected by domestic violence, by providing a cohesive and supportive framework
- Improving interagency networks, and developing collaborative partnerships with government and non government agencies, businesses and the local community, to address and respond to domestic violence with a coordinated approach.
- Providing a forum where all agencies delivering services to women and children experiencing domestic violence can come together to discuss issues of concern, and advocate to address these issues in a respectful and professional manner.

- Providing education, information and resources to local services, businesses and community members.

CDVLC Membership

Membership is open to workers from government and non government agencies with a commitment to the elimination of domestic and family violence, and working in the local community of Campbelltown.

Members currently include:

- Campbelltown City Council
- Macarthur Legal Centre
- Domestic and Family Violence Intervention Service (DAFVIS)
- Rosemeadow Community Health Centre- South Western Sydney Area Health Service
- Macarthur Sexual Assault Service- South Western Sydney Area Health Service
- W.I.L.M.A Women's Health Centre
- Benevolent Society Centre Campbelltown
- Campbelltown Police Domestic Violence Liaison Officers
- Glenquarie Police Domestic Violence Liaison Officers
- Macarthur Diversity Services Initiative
- Housing NSW
- Campbelltown Hospital
- Department of Justice and Attorney General
- Macarthur Women's Domestic Violence Court Assistance Service (MWDVCAS)
- Centrelink
- Traxside Youth Health Service
- LifeCare - BCS
- Uniting Care Burnside Brighter Futures
- Chisholm Care - BCS
- St Vincent de Paul Society
- Marcia's Women's Refuge
- Campbelltown Family Support Service
- Campbelltown Hospital
- D.A.W.N Housing
- Junction Works
- Campbelltown Family Relationship Centre

(Please refer to the Appendix for services these partners provide in the Campbelltown LGA).

Examples of Events of the CDVLC

'Reclaim the Train'-

Community and transport safety was the theme for this years Reclaim the Night. On Thursday 27 October 2011 together with the CDVLC, local women and agencies road the train to several stations and promoted the initiative. 144 travellers were surveyed about their experience with public transport and the night ended at Macarthur Square where information was also being handed out about non violence against women and safety.

Chalk White Ribbon-

White Ribbon Day 2011 will be launched at the University of Western Sydney, Campbelltown where an oversized white ribbon will be chalked on the hills which lie

adjacent to Narellan Road. Local Councillors, MP's, staff and students were invited to take the oath not to commit violence against women. In addition to this white ribbons were be sold at targeted locations across Campbelltown.

Art Shoes Installation-

Together with the Non-English Speaking Background Domestic Violence Network, an 'Art Shoes Installation' will be created at Council's Ingleburn Library for the 16 Days of Action 2011. The display is of shoes of women and children that represent those harmed by domestic violence. Cards in English and other selected language will convey the victim's story and the project hopes to generate awareness and support for Domestic violence.

Older Women's DV Forum –

Stop Domestic Violence Day 2010, the CDVLC together with the Benevolent Society, Older Women's Network and Campbelltown City Council, hosted a forum for local residents and service providers highlighting the issues involved with DV for older women. Speakers included Elizabeth Broderick and Libbi Gorr.

'When Home is Where the Hurt is'-

The documentary was created for Stop Domestic Violence Day 2009 and was funded by the Department of Justice and Attorney General. It features local survivors and prominent people voicing the issue of Domestic Violence. The film is a valuable and powerful documentary that was created with the intention of it being a tool for educational and training purposes. Both men and women feature in the documentary to give a clear strong message about appropriate behaviour in relationships. The documentary will be distributed by the committee to other Domestic Violence Committee's in January 2012.

Solving the Jigsaw Project-

This was a community based arts project in partnership with the Campbelltown/Camden Hospitals and the CDVLC. 16 Local service clients participated in the development of a large mural and message of non-violence that was placed at the entrance of Campbelltown hospital. It was revealed on Stop Domestic Violence Day 2008 and plans are now underway to create a garden for the second stage of the project and will be the basis of Stop Domestic Violence Day 2012.

Women's Cards-

The CDVLC used funds from the Office for Women to create a women's card which provided the contact details of relevant services for women in the local government area. These cards are distributed throughout local services and events.

Working Towards Better Practice Forum-

After involvement in the 2006 forum the need for an enhanced DV service model that compliments the Domestic Violence Intervention Court Model was highlighted and has since been implemented in the Campbelltown region with better efficiencies between services including the police, DAFVIS, MWDVCAS and women's health centres.

Staff Training

Council will be running staff training sessions for its Children's Services section in 2012. The aim is for staff to have awareness and knowledge of domestic violence and how it may affect their role while working with children and families. Sessions will include issues such as; what is domestic violence, child impact, behaviour and

signs, what to do if they suspect an incident, parent/child disclosure, options and what support services can do for families.

Women's Strategy

Council plan to expand their commitment to women by developing and implementing a Women's Strategy which will provide targeted, community-based direction to Council on women's issues, needs and initiatives which aims to raise the profile of women in Campbelltown and their rights.

Will include strategic actions that target:

- Raising a positive profile of women in Campbelltown.
- Promote women's rights.
- Encourage employment and further education.
- Raise awareness of Gay Women's issues.
- Reduce violence against women through raising awareness; facilitating an annual forum; promotion of supports and services available; and increase community involvement in relevant programs.
- Decrease teen pregnancies.
- Promote and support education on post/pre-natal care and other relevant issues.
- Improve recognition of women's role as carers in the community.
- Provide culturally appropriate resources and services to CALD women.

Appendix

Appendix 5: Non-government services in Campbelltown, Walgett and Lismore. New South Wales Auditor-General's Report Performance Audit: Responding to domestic and family Violence (2011).

Appendix 5: Non-government services in Campbelltown, Walgett and Lismore

	Campbelltown	Walgett	Lismore
Domestic and family violence specialist services			
Women's refuge for women leaving violence	✓		✓
Staying Home Leaving Violence	20 women assisted in 2009–10	Funding approved Nil assistance	
Court support	2 services		✓
Non-specialist services			
Over 50 per cent of clients estimated to have domestic and family violence issues			
Women's refuge	✓	✓	✓
Brighter Futures Early Intervention	✓		✓
Long-term accommodation for people exiting refuges	✓		✓
Male counselling	✓		✓
Voluntary perpetrator programs			✓
Over 20 per cent of clients estimated to have domestic and family violence issues			
Women's and Aboriginal family health	✓	✓	✓
Drug and alcohol medium-term accommodation	✓		✓
Mental health medium-term accommodation	✓		✓
Family support services	✓	✓	✓
Counselling and referral	✓	✓	✓
Long-term social housing	✓	✓	✓

Source: Audit Office research 2011.