

tendered by Mr Rod Young
4 September 2014
Received by Ms Shu-fang Wei

Photos

As you can see in my supplementary submission I bought up the issue of vegetation clearing around the communication towers.

The memorandum from the manager RFS Customer Service Centre, Region North is the result so far.

The NSW Farmers Association rep on the BFCC told me a similar situation at Mt Canobolas Orange had been further cleared after Mt Stromlo Observatory was lost in the Canberra fire. So I went and had a look and took photos.

Photo 1 –

Canobolas – My back against a tower compound. Scrub 100 metres away but too close to tower on the left.

Photo 2 –

Canobolas – Scrub too close to tower which is on left hand side in photo 1.

Photo 3 –

Infrastructure on Canobolas which was within the compound from which I took photos 1 and 2.

Photo 4 –

Air Navigation facility on Canobolas for Orange Airport.

Photo 5 –

Canobolas – There is no consistency in the clearing. This is scrub growing right up to the compound.

Photo 6 –

Canobolas – Scrub almost to the compound on the back fence.

Photo 7 –

Canobolas – Cleared area either side of connecting road between the towers. This will give fire crews a safety margin.

Photo 8 –

Cenn Cruiach – Notice narrow access road between towers. Photo taken from main tower looking back 500 metres to the other 2 towers. Note no protection for fire crews.

Photos 9 and 10 –

Cenn Cruiach – Infrastructure note inflammable liquid sign and cables leading from building and up the tower.

Photo 11 –

Cenn Cruiach – Scrub on edge of ring road, just outside the proposed 40 metre clearance.

Photo 12 –

Cenn Cruiach – Taken from other side of main tower. Timber on right hand side of photo won't be removed in the proposed 40 metre clearance.

Photo 13 –

Cenn Cruiach – Taken from under the power line. The clearing of the easement bar for a couple of small trees, gives a good example of the protection which could be given to the sight by a felling of the timber for 100 metres radius.

Photo 14 –

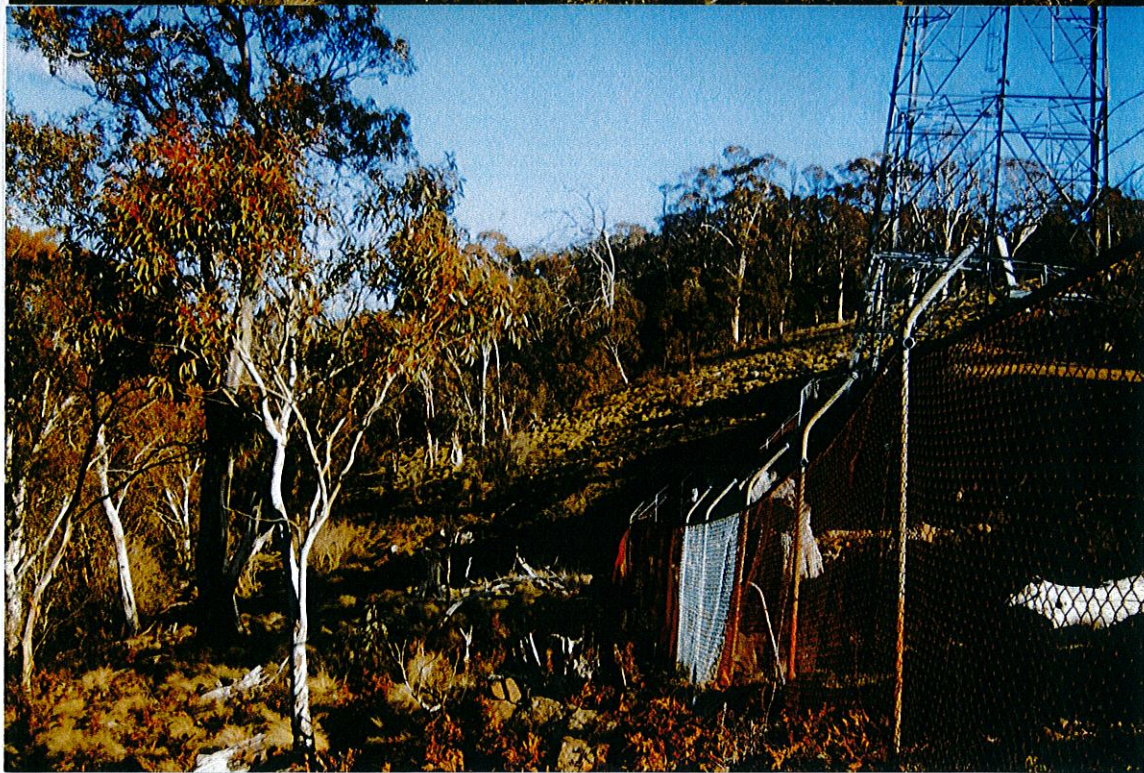
Cenn Cruiach – Emergency Services tower to be cleared 10 metres. Both poles in the photo are timber.

Photo 15 –

Cenn Cruiach – Road and Maritime Services Tower. Again only 10 metres clearance proposed.



1



2



3



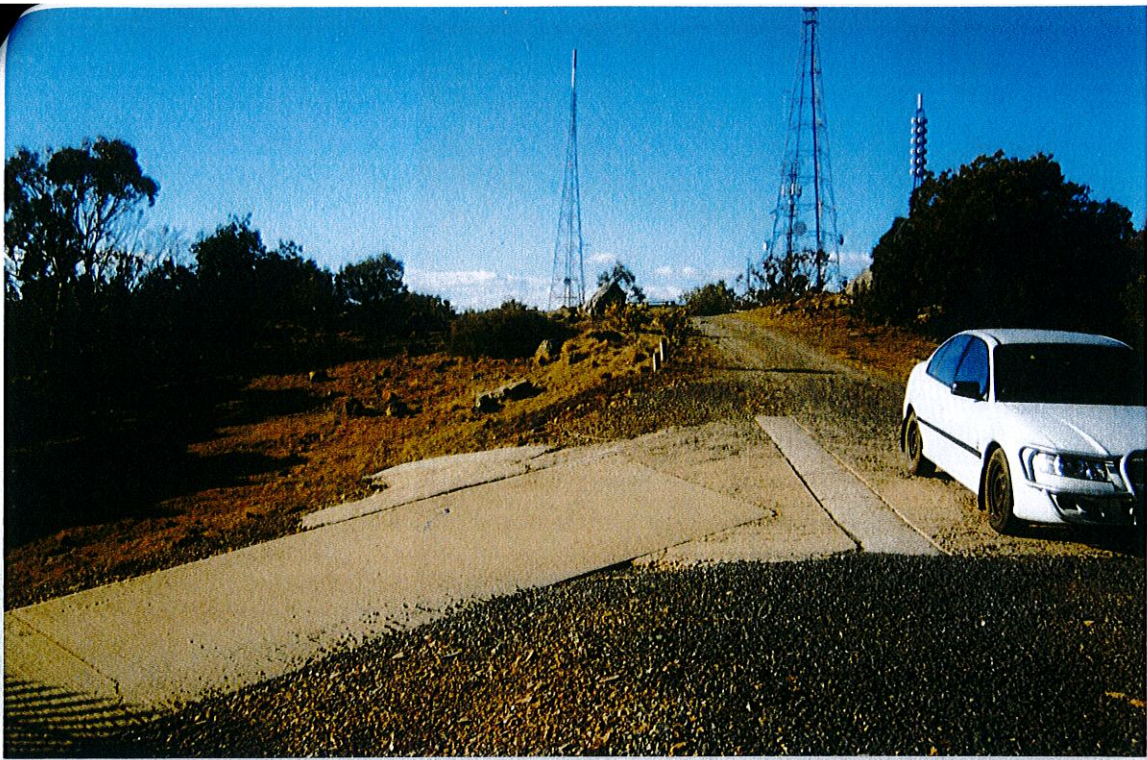
4



5



6



7



8

11



9 and 10





12



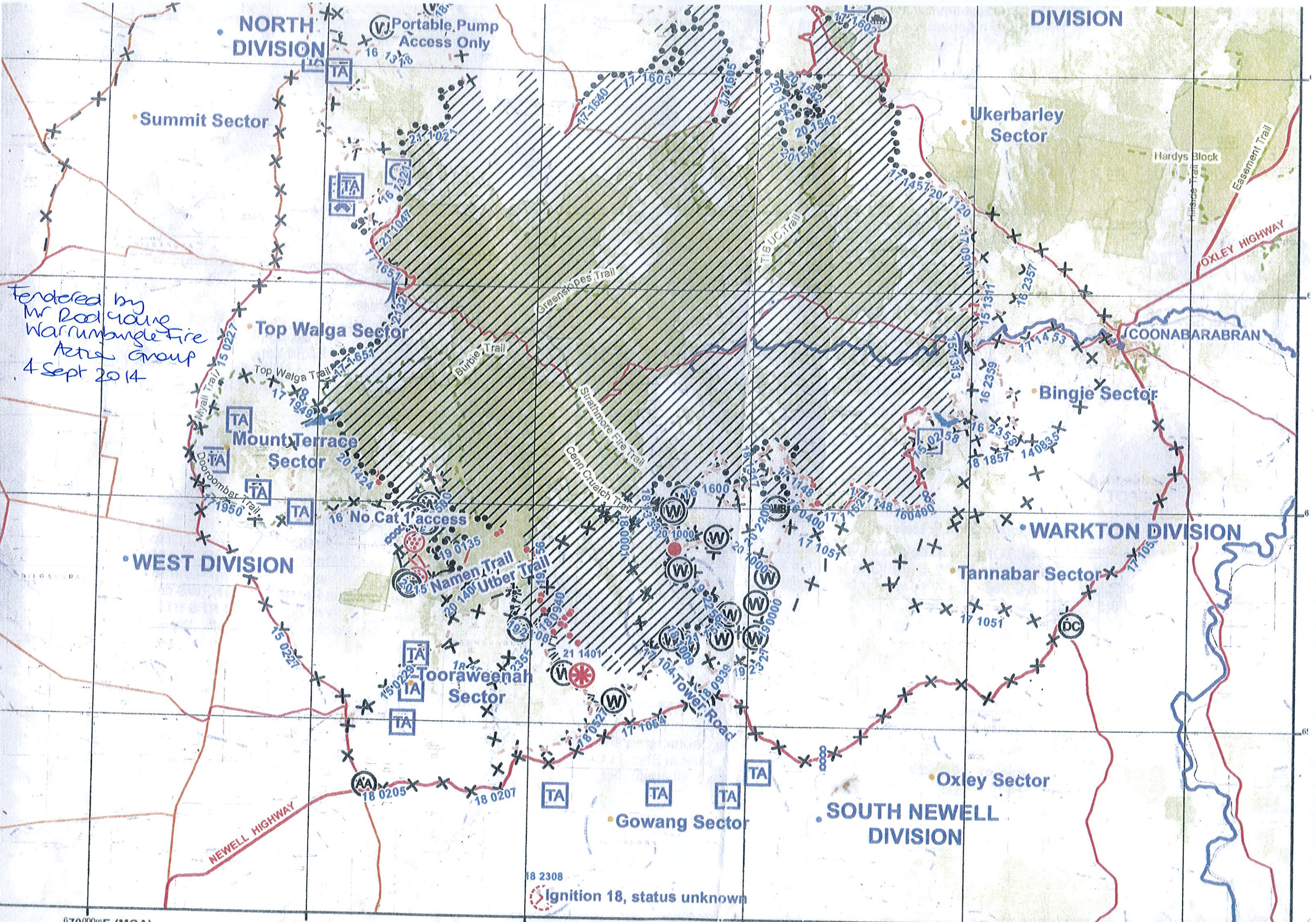
13



14



15



Tended by
Mr Rod Young
Warrumbungle Fire
Area Group
4 Sept 2014

NORTH DIVISION
Portable Pump
Access Only

Summit Sector

Ukerbarley Sector

Top Walga Sector

Mount Terrace Sector

Bingie Sector

WEST DIVISION

No. Cat 1 access

WARKTON DIVISION

Tannabar Sector

Tooraweenah Sector

Oxley Sector

Gowang Sector

SOUTH NEWELL DIVISION

Ignition 18, status unknown



WARRUMBUNGLE

Mt Cenn Craich

Scale: 1 : 10,000



LEGEND

Bush Fire Management Zone

- Asset Protection Zone
- Strategic Fire Advantage Zone
- Land Parcels (Yellow)

- Paved
- Unpaved
- Paved
- Unpaved
- Minor Road
- Two-Wheel Drive Track
- Four-Wheel Drive Track
- Walking Track

Fire_Trails_State_HQ

- Category 1, Essential
- Category 7, Essential
- Category 9, Essential
- Unknown, Essential
- Untrafficable, Essential

PRODUCTION INFORMATION

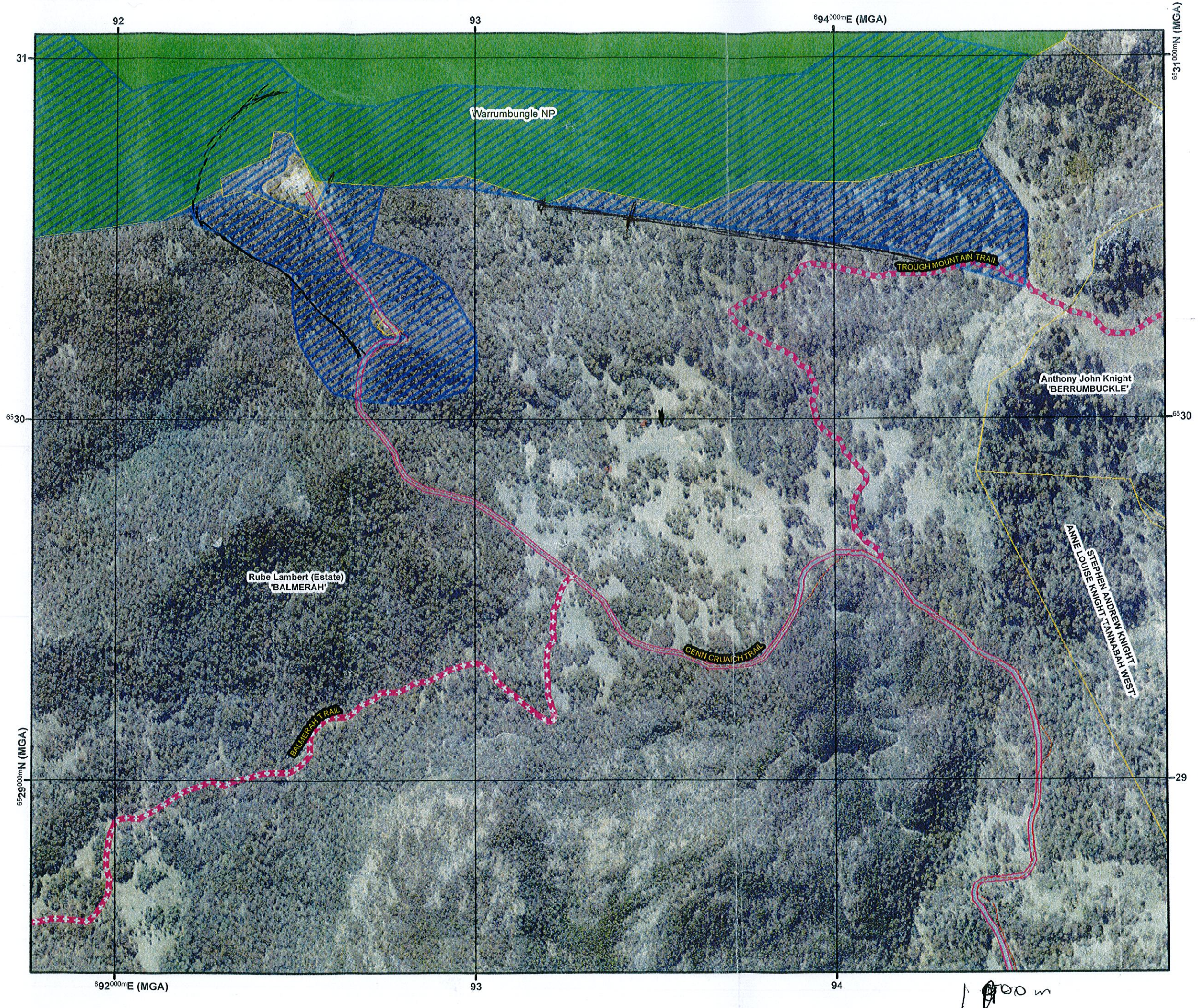
Map Details:

Base Data: © LPI, SPOT, AAM, SKM, OEH, Sensis, Kattron
 Map Projection: GDA 1994 MGA Zone 55
 Print Date / Time: 10/04/2014 3:31:19 PM
 Produced by: Stephen O'Callaghan

WARNING INFORMATION

- This map has been prepared by a NSW Government Agency ("the Agency") using data supplied to it by other agencies and entities.
- The Agency has not verified or checked the data used to prepare this map. The map may contain errors and omissions. The Agency has not made any attempt to ground truth the map.
- There will be a margin of error in relation to the location of features recorded on the map. The Agency is unable to specify the extent or magnitude of that margin of error.
- Significant changes may have occurred:
 - in the time between which the data was originally collected and the map produced, and
 - since the map was produced.
- Users must, wherever possible, ground truth the map before relying on it or the accuracy of the map or the information recorded on the map for any purpose.
- The Agency accepts no responsibility for any injury loss or damage arising from the use of this map or any errors or omissions in the information recorded on the map.

KEY MAP



*Entered by Mr Earl Young
Warrumbungle Fire Action Group
4 Sept 2014.*